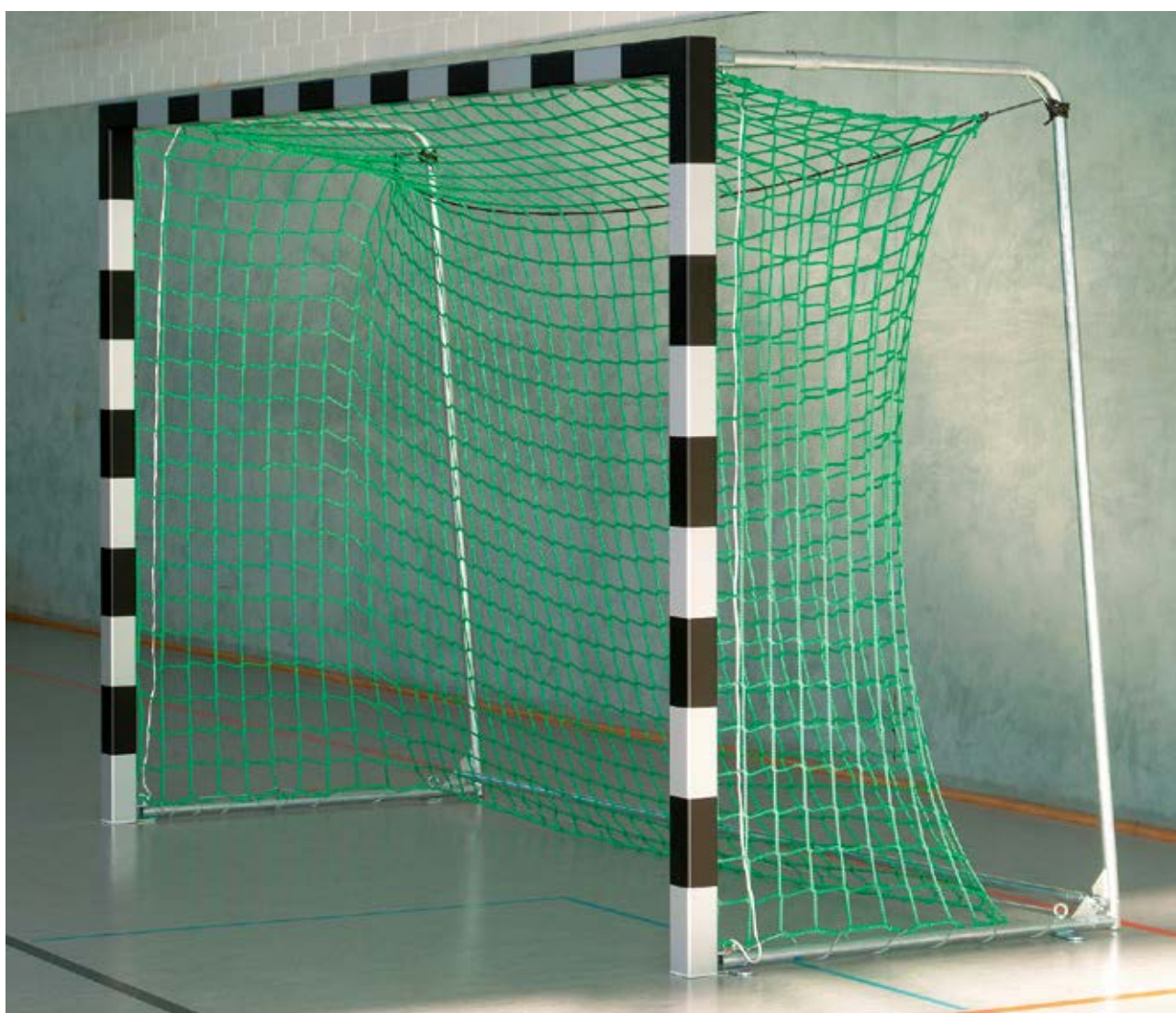


Sport-Thieme® Handball Goal, 3x2 m, Free-Standing or socketed

Thank you very much for choosing a Sport-Thieme product!

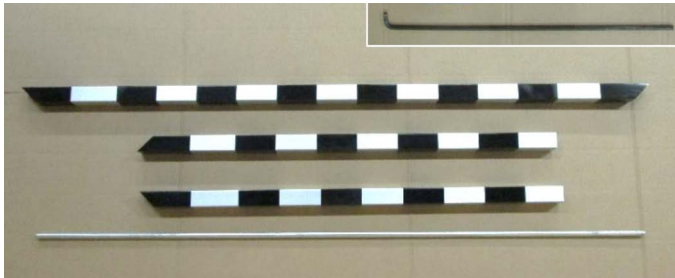
Please read the instructions fully before you assemble the equipment, so you can enjoy the product and safety is guaranteed. We are happy to answer any questions you may have.



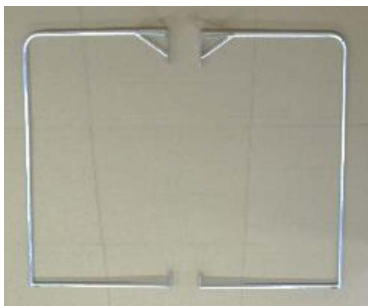
1. Scope of delivery

Please check the following content before assembly.

The following indicated quantities refer to 1 Handball goal. In case of a delivery in pairs we double the amount correspondingly. Pictured colours of profiles are only samples and may differ from delivered profiles.



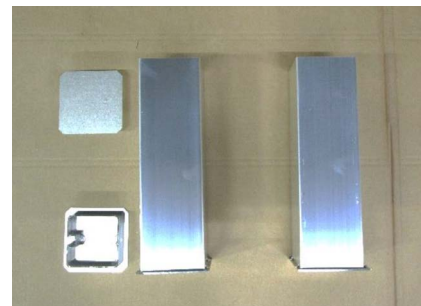
- 1x Galvanized steel ground tube $\text{Ø } \frac{3}{4}''$
- 1x Crossbar, profile 80 x 80mm
- 2x Uprights, profile 80 x 80mm
- 1x Hexagon screwdriver SW6, DIN 911, length approx. 470mm (only for goal in ground sockets)



- 2x Rigid net hoop

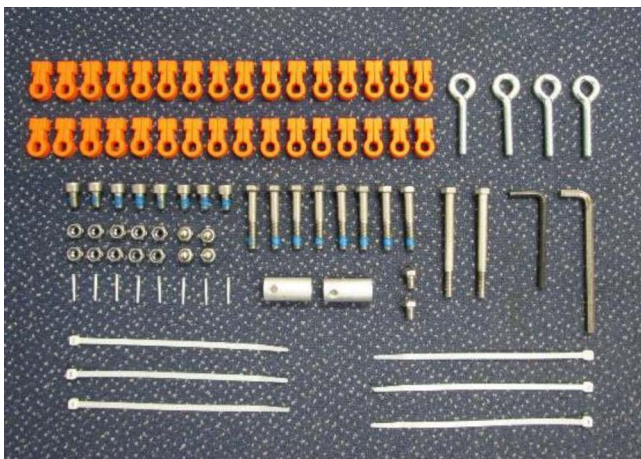


- 2x Steel corner joint
- 8x Steel plate
- 2x Upright cap
- Accessories



Only for catalogue no. 2034502 – goal in ground sockets:

- 2x Ground socket, length 300 mm
- 2x Cap for ground socket



Accessories:

- 32x Net holder
- 2x Bushes with thread M8, of aluminium round tube 20 x 5 mm, length 40 mm
- 6x Plastic holder
- 8x Safety hexagon screw M8 x 50mm, DIN 931
- 8x Safety hexagon socket cylinder screw M8 x 14mm, DIN 912
- 2x Hexagon screw M8 x 90, DIN 931
- 2x Hexagon screw M8 x 12, DIN 933
- 10x Self-locking nut M8, DIN 985
- 4x Self-locking cap nut M8, DIN 986
- 4x Ring nut M8 x 50
- 8x Plug pin
- 1x Hexagon screwdriver SW5, DIN 911, black
- 1x Hexagon screwdriver SW6, DIN 911, length 120 mm
- 1x Assembly instruction

Assembly instructions for Art.-Nr. 201 0915/203 4502

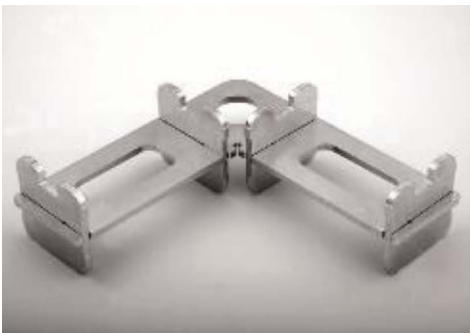
2. Assembly of the goal

The following tools are necessary:

- 2 wrench/ring spanners 13 mm
- 1 mallet/hammer
- 1 drill Ø 1.5 mm
- 1 thin screw driver (for net hook fixing, if necessary)

a) Assembly of crossbar/uprights:

Lay crossbar and uprights on the ground, groove facing upwards and mitres joining. Stick 4 steel plates on steel corner joint (see 1st picture bottom left). Then stick crossbar and upright on steel corner joint (see other bottom pictures).



b) Assembly of net hoops:

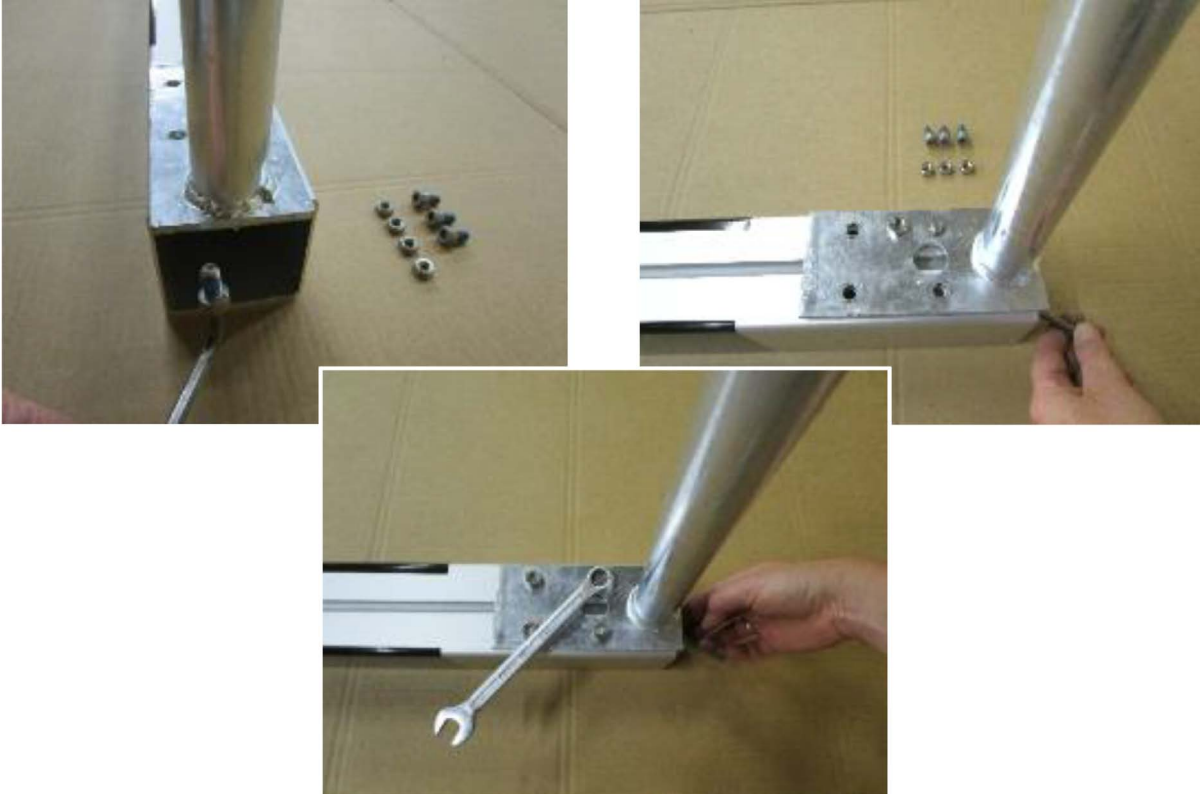
Place rigid net hoops on the right and left side of crossbar/upright construction. Fixing of net hoop at the top: Screw 4 hexagon socket screws M8 x 50, DIN 931 into the steel corner joint (see picture bottom left).



Assembly instructions for Art.-Nr. 201 0915/203 4502

c) Assembly of net hoop at the bottom- goal free standing, cat. No. 2010915:

Screw from upright's inside 4 hexagon socket cylinder screws M8 x 14mm, DIN 912 in the bottom end of the upright with extended hexagon screwdriver SW6, length 120 mm. Fix from the outside 4 nuts M8, DIN 934 (see 1nd to 3th bottom pictures). Then adjust net hoops at the top and at the bottom and tighten all screws.



Assembly of net hoops at the bottom - goal in ground sockets, cat. no. 2034502:

The assembly is done as described above but with extended hexagon screwdriver SW6, length approx. 470 mm (see the following pictures).



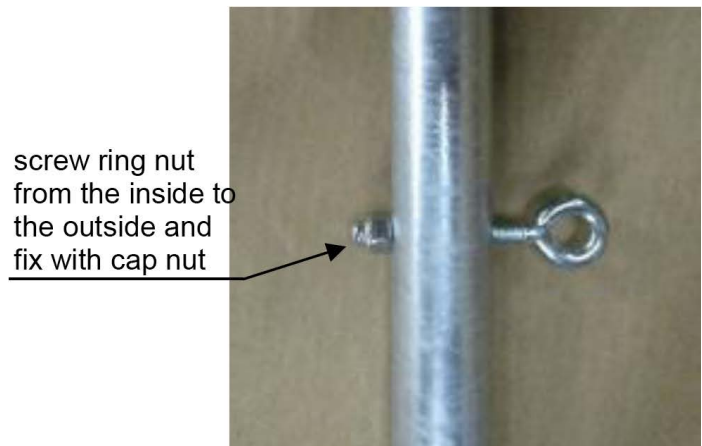
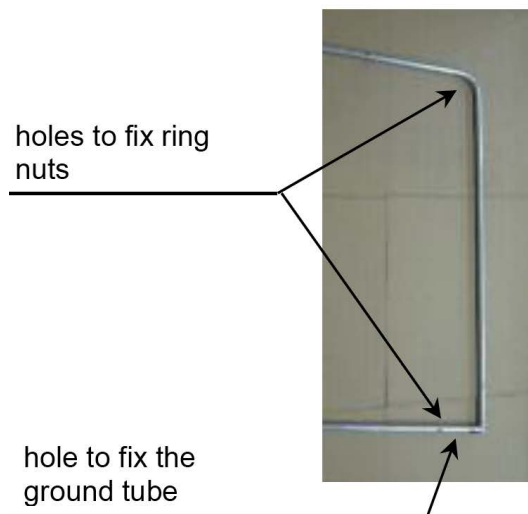
d) Assembly of caps:

Stick caps in the open ends of uprights (see picture bottom left). Bore them with drill 1.5 mm through the holes provided in the uprights. Then fix plug pins with a hammer/mallet (see picture bottom right).



e) Assembly of ring nut:

Stick from the inside ring nuts M8 x 50 through lateral and upper net hoop holes and fix them with cap nuts M8, DIN 986 (see bottom picture).



f) Assembly of ground tube:

Stick hexagon screw DIN 931, M8 x 90 through bush of aluminium tube (see picture bottom left). Then push bush into the ground tube (see picture bottom mid) and screw hexagon screw DIN 933, M8 x 12 through holes of bush and ground tube. Tighten screw (see picture bottom right).



Assembly instructions for Art.-Nr. 201 0915/203 4502

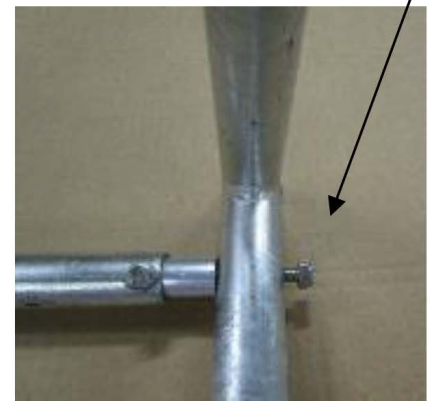
We are your team!

Fix ground tube between the net hoops (see 1st picture bottom left). Screw 1 self-locking nut M8, DIN 985 so that the nut outside is flush with the screw of the bush (see picture bottom right).

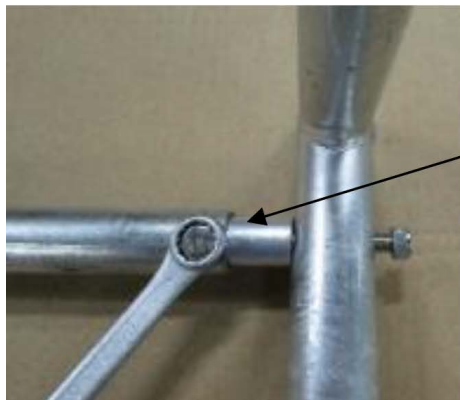
Then unscrew hexagon screw at the ground tube. Finally push screw with self-locking nut completely into the ground tube so that the nut is directly fixed on the net hoop (see pictures bottom left and right). Then tighten all screws and nuts.



hole to fix the ground tube



1. nut outside flush with screw



2. unscrew screw

3. push screw with nut completely into the ground tube



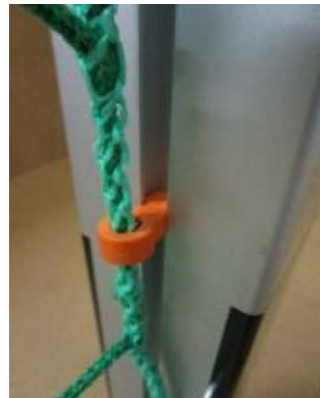
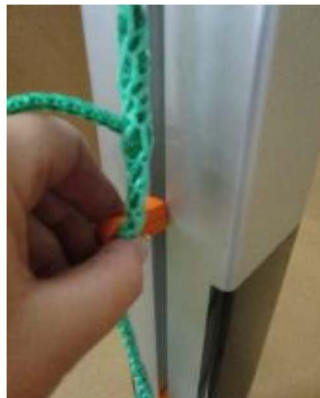
Assembly instructions for Art.-Nr. 201 0915/203 4502

3. Assembly of the net

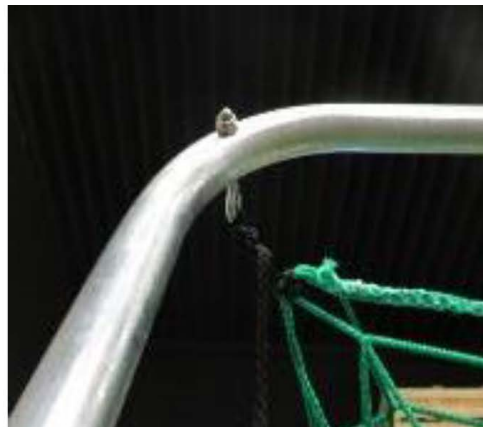
- a) The net is not part of the delivery.
Fix net holders at the net rope. Bend open net holders a little and press rope into the holders. We recommend the following distribution of net holders:
crossbar : 16 pieces
uprights : 8 pieces each

After having mounted all net holders fix net at the goal construction. Erect the goal. Stick net holders in the net hook rail and fix them with a 90 degrees' rotation. Use a thin screw driver if necessary (please avoid damages at the goal).

Fix net with plastic holders in the bottom part of net hoops. Cut off protruding ends of plastic holders (see picture bottom right).



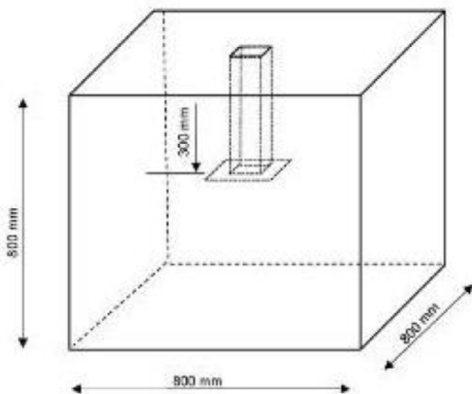
- b) Fix ends of upper and lower tensioning rope at the mounted ring nuts. Cut off protruding rope ends (see bottom picture).



- c) Dismantling of the net is also done by rotation of the net holders through 90 degrees. Use again a thin screw driver if necessary.

4. Assembly of the ground sockets

- For handball gates with a size of 3,00 x 2,00 m the distance of the ground sockets must be 3,08 m (middle socket – middle socket = center distance).
- Concrete ground sockets according to the sketch. Foundation dimensions: 800 x 800 x 800 mm.
- Do not apply an acceleration mixture or antifreeze during as these adhesives may cause damages to the ground sockets.
- After hardening of the concrete, the goal can be inserted into the sockets.



5. Maintenance, safety and storage instructions



This goal is only constructed for Handball and not for other purposes. Check all screwed fastenings before use and repeat it from time to time. It has to be protected against overturning at any time.

Do not climb net or goal frame. It is not allowed to fix additional parts or extensions at the goal frame which may impair the safety of the goal (according to EN 749).

Check screwed fastenings regularly and change damaged and wearing parts if need be. The unit should be maintained once a year by skilled personnel.

Notice: Due to our continuous quality check of products and equipment technical modifications are possible.

To avoid damage and misuse goals have to be stored secured and in an upright position when not in use.