

# Swimming Pool Shelved Trolley

**Thank you very much for choosing a Sport-Thieme product!**

Please read the instructions fully before you assemble the equipment, so you can enjoy the product and safety is guaranteed. We are happy to answer any questions you may have.

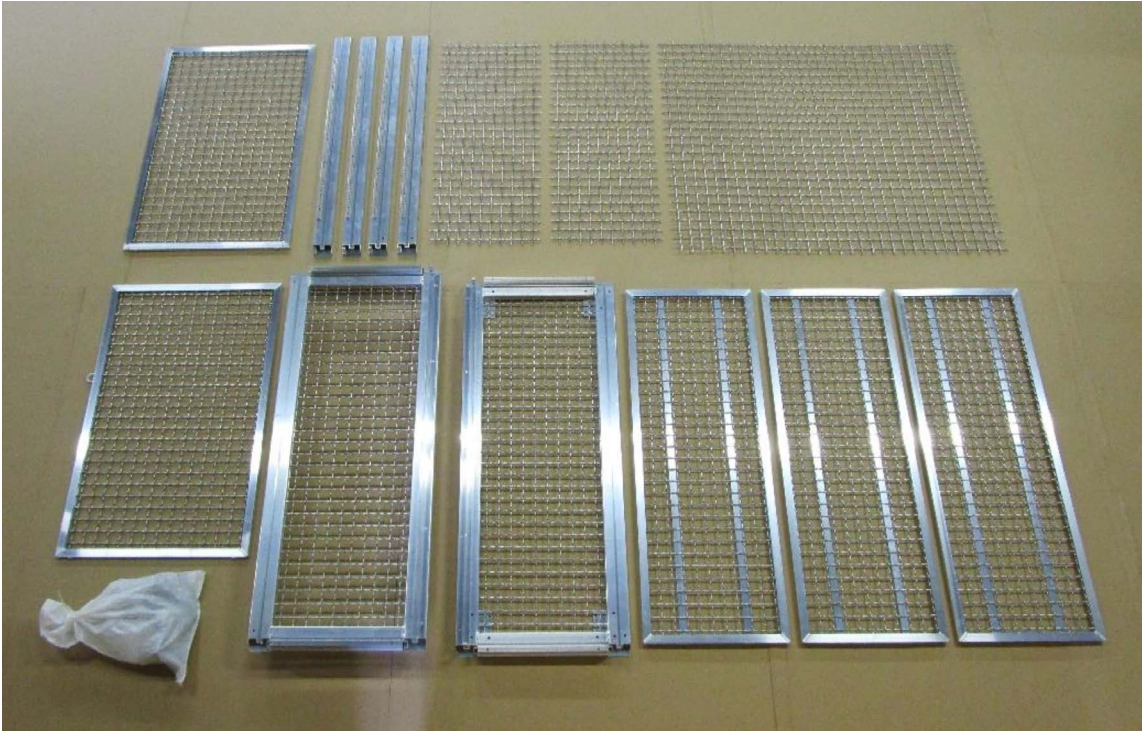




## Assembly instructions for Art.-Nr. 270 7903 ff.

### 1. Scope of delivery

Please check the following content before assembly.

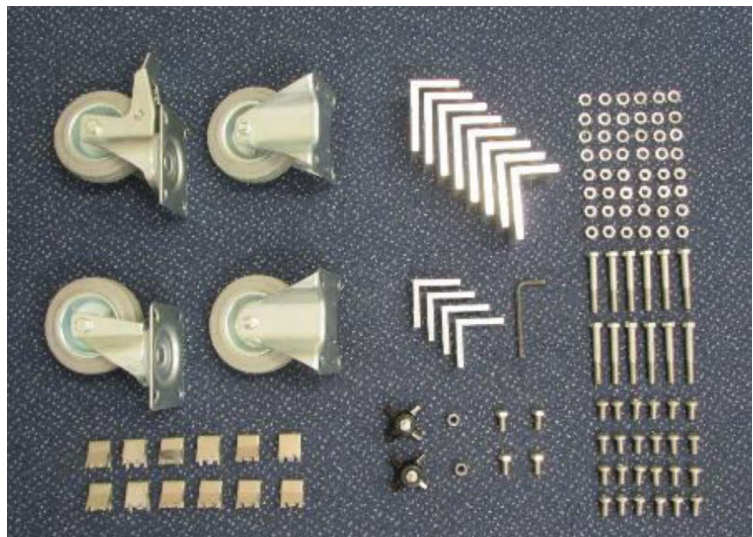


#### Contents:

- 1x complete welded bottom part
- 1x complete welded top part
- 4x side spar with punched bars
- 2x completely welded inserted tray
- 2x door element
- 2x crimped meshes 1.030 mm x 483 mm for side parts
- 1x crimped meshes 1.190 mm x 1.060 mm for back wall
- 1x accessories with mounting parts and rolls

#### Accessories:

- 8x angle 75 x 50 x 7 mm, length 50 mm
- 4x angle 50 x 50 x 6 mm, length 20 mm
- 8x steel clip for aluminium punched bars
- 2x frame roll 100 mm Ø, grey
- 1x guide roll 100 mm Ø, grey
- 1x guide roll 100 mm Ø, with locking device, grey
- 24x fan type lock washer DIN 6798, 8.4 mm Ø
- 12x hexagon screw DIN 931, M 8 x 55mm
- 4x hexagon screw DIN 933, M 8 x 16mm
- 24x oval head screw DIN 7380, M 8 x 16mm
- 24x nut DIN 934, M 8
- 2x self locking nut DIN 985, M8
- 2x hand wheel 50mm Ø, M8 x 20mm
- 1x hexagon screwdriver SW 5
- 1x assembly instruction



**For trolley no. 270 7929:** 4 Feet with caps 25 x 25 grey instead of 2 frame and 2 guide rolls.

## Assembly instructions for Art.-Nr. 270 7903 ff.

### 2. Assembly of the trolley

We recommend the assembly on a suitable surface to avoid damages of the profiles!

#### a) Preparation:

Unpack parts and arrange them clearly.

The following tools are necessary:

- 2 wrench/ring spanner 13 mm
- 1 slotted screwdriver
- 1- 2 assistants to mount the top part.



#### b) Mounting of rolls at the bottom part:

Put the bottom part on the ground with welded plates facing upwards.

Place 2 frame and 2 guide rolls at each small side of the bottom part.



frame rolls

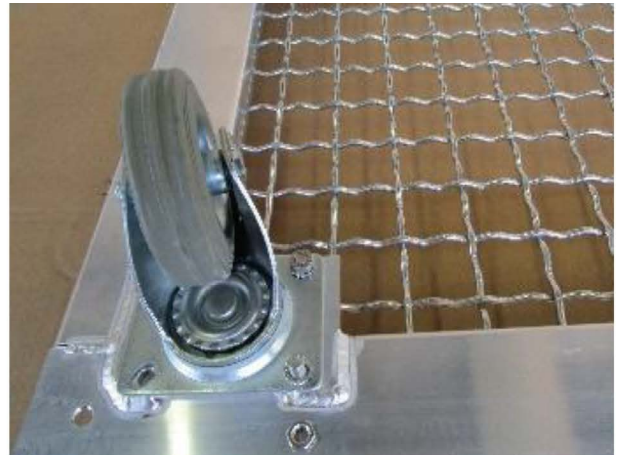
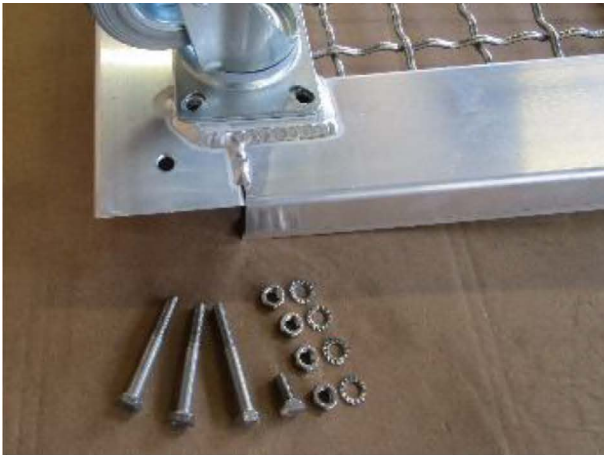


Place guide roll with locking device at the front side of the trolley – slide area for the door

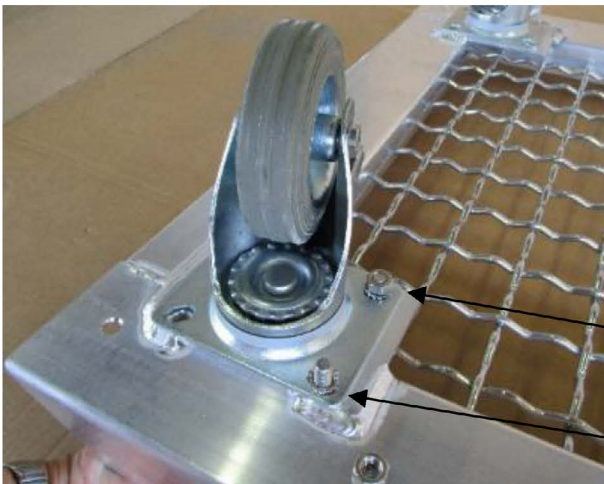


guide rolls





For trolley no. 431: screwing of feet in the same way as done with the frame rolls.



hexagon screw M 8 x 16 mm

mount fan type lock washer Ø

Fix each roll at the bottom part as shown below with 3 hexagon screws DIN 931, M 8 x 55, 1 hexagon screw DIN 933, M 8 x 16 mm, 3 fan type lock washers DIN 6798, Ø 8.4 and 3 nuts DIN 934, M 8 (see above picture).

Pay attention to the position of the fan type lock washer (see picture bottom right). First push hexagon screws from the bottom through the borehole. The short screw M 8 x 16 mm is mounted at the crimped mesh side. Then mount fan type lock washer from the top and fix nut M 8.

## Assembly instructions for Art.-Nr. 270 7903 ff.

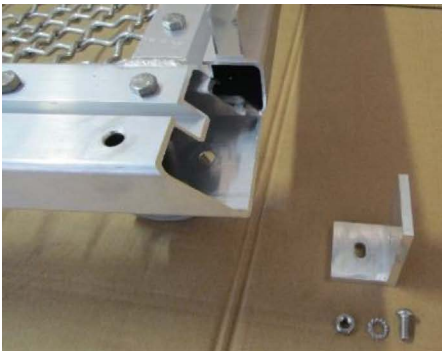
### c) Mounting aluminium angles on top and bottom part:

Screw angles 75 x 50 x 7 mm, length 50 mm at the 4 corners of top and bottom part with 1 oval head screw DIN 7380, M 8 x 16, 1 fan type lock washer DIN 6798, Ø 8.4 and 1 nut DIN 934, M 8 (see following pictures).

Place angle with short leg (length 50 mm with long hole) and mount it inwards approx. 1 mm from the outside edge. Stick from the bottom oval head screw through the borehole of the bottom element.

Then fix from the top fan type lock washer and screw the nut. To make possible a later alignment when mounting the uprights unscrew bolts again by a quarter turn. Attention: unscrew bolts as described.

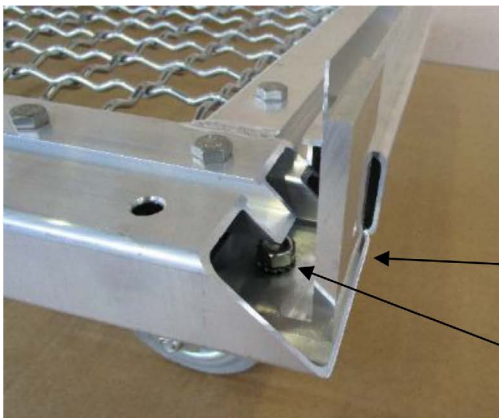
The angle cannot be fixed again after having mounted the top part.



Fixing of angle 75 x 50 x 7 mm, length 50 mm at the back of the bottom part



Fixing of angle 75 x 50 x 7 mm, length 50 mm at the front side of the bottom part (with rails for the door)

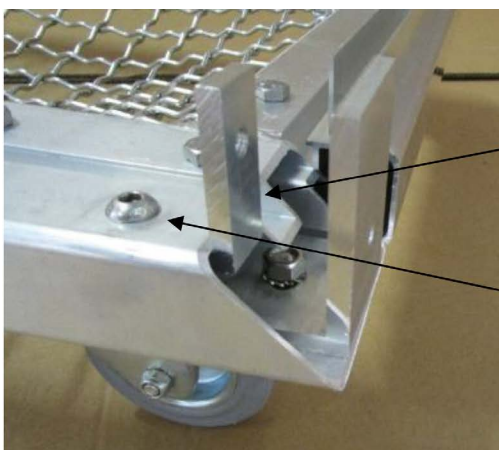


Fixing of angles at the top part:  
as shown and described with the  
bottom part

mount angle inwards with 1 mm distance

fan type lock washer Ø 8,4 mm + nut M8

Then also screw 4 angles 50 x 50 x 6 mm, length 20 mm, with 1 oval head screw each DIN 7380, M 8 x 16 at the corners of top and bottom part (only at the back side of the trolley at mitre profiles, see the following picture).



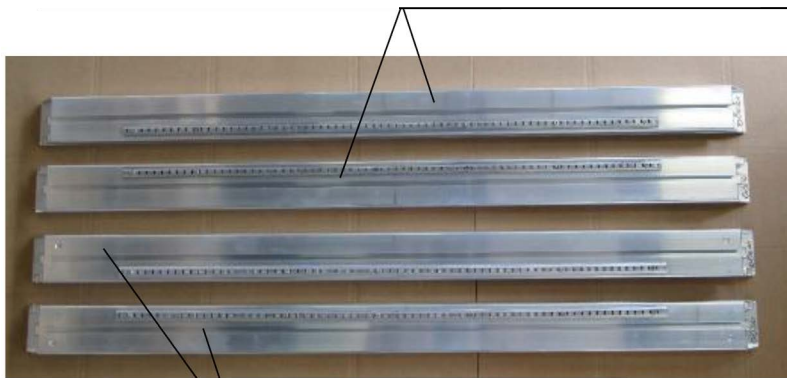
angle 50 x 50 x 6 mm, length 20 mm

oval head screws M 8 x 16

**Assembly instructions for Art.-Nr. 270 7903 ff.**

**d) Assembly of side spars with punched bars :**

Stick the 4 side spars on the angles being mounted on the bottom part (point c). Take care that the side spars with 2 boreholes are mounted at the back side of the bottom part.



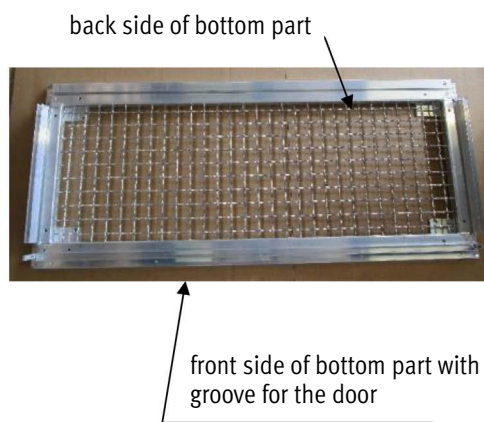
Mount side spar without boreholes at the front side of the bottom part where there are the rails for the door.

mount side spar with 2 boreholes at the back side of the bottom part.

Adjust spars so that the boreholes are congruent with thread holes of the angles. Fix side spars with oval head screws DIN 7380, M 8 x 16 (see picture bottom left). Only in the front part of the bottom part the small angle will be pushed into the groove of the side spars and slightly fixed with the grub screw (see picture bottom right).



mount side spar with 2 boreholes at the back side of the bottom



back side of bottom part

front side of bottom part with rail/groove for the door

already mounted angle      front side of top part with rail/groove for the door



Mount side spar at the front side of the bottom part (with rail for the door). Here the existing small angle has to be pushed into the groove of the side spars. Fix the grub screw only slightly.

back side of top part



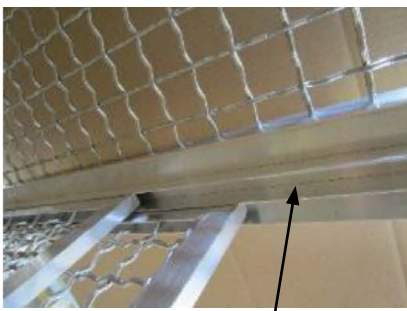
**Assembly instructions for Art.-Nr. 270 7903 ff.**

**e) Assembly of crimped meshes and door:**

Push 2 crimped meshes of the side part (1.030 x 483 mm) and 1 crimped mesh of the back side (1.190 x 1.060 mm) into the grooves of side spars and into the groove of the bottom part.



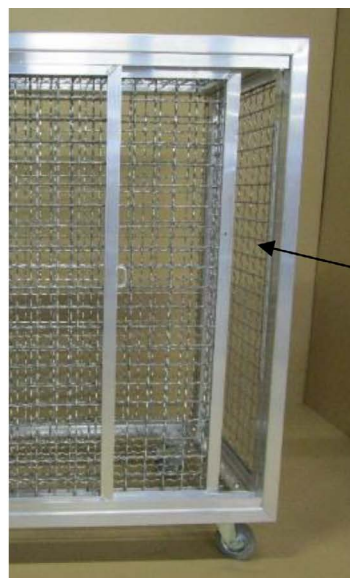
Then mount the sliding doors into the grooves of the bottom part (see picture bottom left). The door with the welded ring for the padlock has to be mounted towards the trolley centre. See the following pictures.



Guiding rail of door in the top part



guiding rail of door in the bottom part



The boreholes in the door frames have to be set at the right and left outside of the front part. The borehole has to be set above the middle of the total trolley height (see dimensions picture left).

## Assembly instructions for Art.-Nr. 270 7903 ff.

### f) Assembly of top part on side spars:

For this assembly you need 1 to 2 assistants.

Stick top part on the 4 side spars (see following pictures). Attention: Take care that doors are running free in the rails/grooves and check if all crimped meshes also move accurately in the grooves.



Adjust boreholes of side spars and top part congruently and fix top part at side spars with the remaining 6 oval head screws DIN 7380, M 8 x 16mm.

Then adjust the whole construction and tighten all screws, especially those of the angles between top and bottom parts.

Finally fix the grub screws of connection side spar to top and bottom part at the front side of the trolley. Use a slotted screwdriver (see picture bottom left).





## Assembly instructions for Art.-Nr. 270 7903 ff.

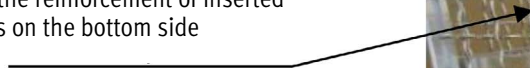
### g) Assembly of inserted trays:

To mount the 2 inserted trays the 8 steel clips have to be inserted into the punched bars of the side spars according to demand (see picture bottom left).

Arrange clips at the same height to guarantee a horizontal position of the inserted trays (see picture bottom left).  
Place inserted trays in the trolley. Take care that reinforcements of longitudinal square tubes are on the bottom side of the inserted trays (see picture bottom right)



Put the reinforcement of inserted trays on the bottom side



**h) Assembly of door handles:**

Stick threaded bar of hand wheels through the holes of door frame and screw self locking nuts DIN 985, M 8.



**3. Maintenance and safety instructions**



Check screwed fastenings regularly and change damaged and wearing parts if need be.

Notice: Due to our continuous quality check of products and equipment technical modifications are possible.

Take care that if possible the trolley is located on a horizontal surface and the locking device of the front roll is fixed to avoid rolling.

To avoid damage and misuse goals have to be stored secured and in an upright position when not in use.

Only use water for cleaning the surfaces. Do not use alcohol or any aggressive chemicals!

Permanent water contact may cause reactions on aluminum surfaces or damages at any existing components made of other materials. Additives in water of swimming pools may increase these reactions.

After use rinse with clear water and dry carefully with a soft cloth.