

555.50



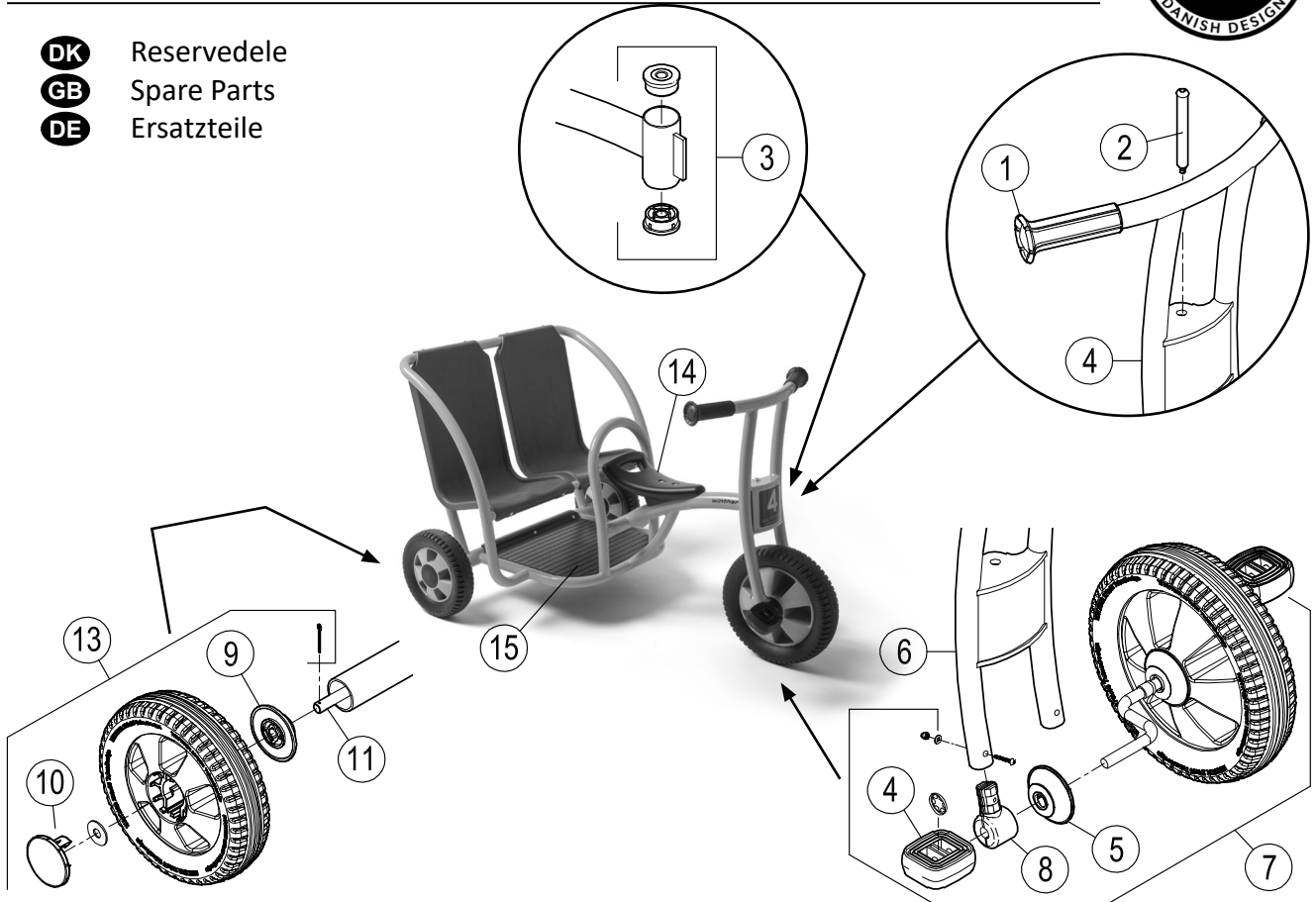
EN 71

ASTM F963

Art.Nr. 2842400



- DK** Reservedele
- GB** Spare Parts
- DE** Ersatzteile



Pos.		Pos.		Pos.	
1	x 2	7		12	
2	x 1 x 2 x 1 x 1 x 1			13	
3	x 2	8	x 2 x 2 x 1	14	
4	x 2 x 2	9	x 2		
5	x 2	10	x 2	15	
6		11	x 1 x 2 x 2		

555.50

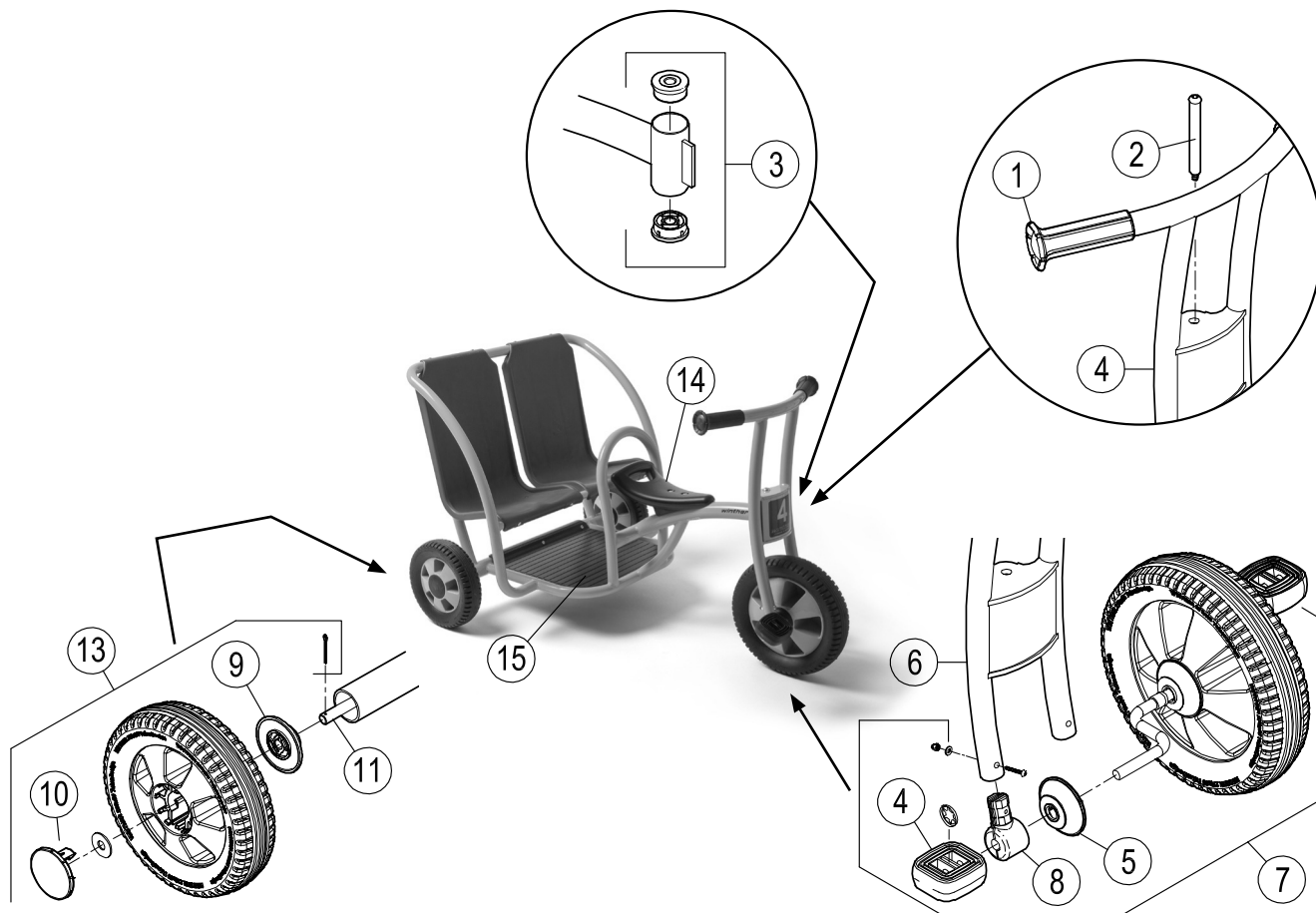


EN 71

ASTM F963



- DK** Reservedele
- GB** Spare Parts
- DE** Ersatzteile



555.50					
Version					
Pos.	1.0				
1	50403				
2	50401				
3	50404				
4	50410				
5	50270				
6	50271				
7	50278				
8	50406				
9	50283				
10	50284				
11	50296				
12	-				
13	50287				
14	50480				
15	50498				